

EXEL UTILO PROFILES FOR HAND RAILS



Exel Composites pultruded UTILO profiles are suitable for high-quality industrial hand rails, which comply with EN14122 part 3.

Our profile range for hand rails consists of the following components:

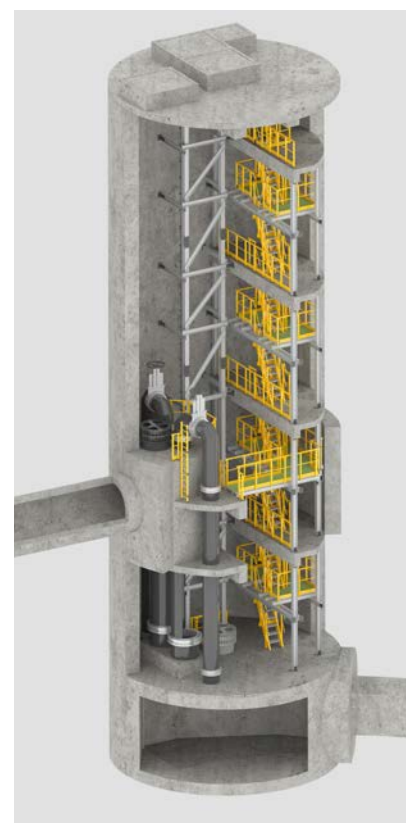
- Ergonomic customer top rail profiles
- Round hollow section for knee rails
- Square hollow section stanchions
- Custom toe rails

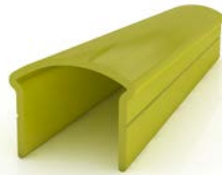
Profiles are manufactured in accordance with EN 13706.

We offer two hand rail profiles: Utilo 60 and Utilo 51 series:

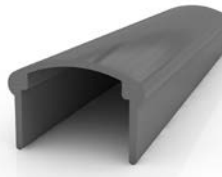
- Utilo 51 for minimum 300N/metre service load (<1,5 m stanchion spacing)
- Utilo 60 for minimum 500 N/metre service load (<1,4 m stanchion spacing)

Compliance with EN14122 is subject to appropriate system design and installation method.

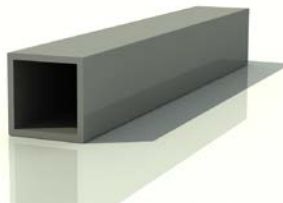




**UTILO 51 mm
custom hand rail**



**UTILO 60 mm
custom hand rail**

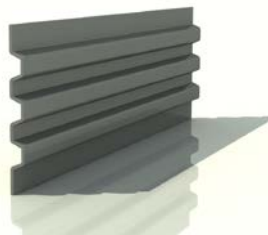


**UTILO 51 x 51 x 6.35 mm square
hollow section stanchion** to fit
the 51 mm handrails

**UTILO 60 x 60 x 4.5 mm square
hollow section stanchion** to fit
the 60 mm Hand rails



**UTILO 38 x 32 mm or 38 x 33
mm round hollow section** for
knee rail.



150 x 15 custom toe rail is
common for all systems and fit
with both 51 and 60 mm series.



Exel Composites can provide performance data for the handrail profiles on request. We do not accept responsibility for system design and recommend that hand rail installations are validated by a structural engineer and/or load testing.

